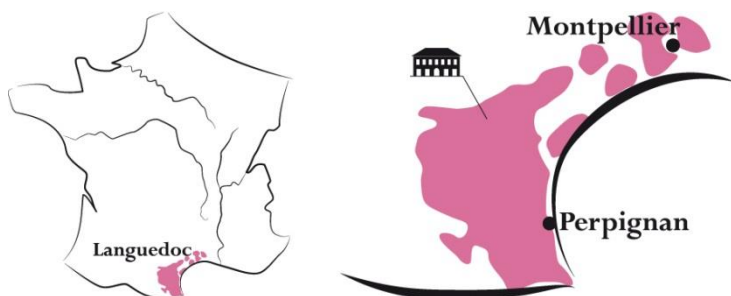


LULUMI

IGP OC PINOT NOIR

LANGUEDOC

1752
SIGNATURE
WINES



Lulumi wines are inspired by the French countryside, its way of living, the uniqueness of every village, full of stories.

Lulumi wines are inspired by the French countryside, its way of living, the uniqueness of every village, full of stories. These wines are all about sharing precious time with friends and family.

Terroir:

Between the Mediterranean Sea and the Pyrenees, Pays d'Oc vineyards are thriving under the sun, refreshed by the winds and the sloppiness of the lands. Here, Pinot Noir, The Burgundian red grapes is having a great time!

Winemaking:

Cold soaking before fermentation to bring lovely vivid colour then fermentation with few light punching down.

Tasting notes :

Lovely colour in the glass. Aromas of black fruits, fresh but ripe. On the palate, full intensity of strawberries, black cherries and dry spices. Smooth and velvety.

Food Pairing :

This will would be perfect with white meat, cured meat or a cheese platter.

